



## *Message from the Headteacher*

Dear Families,

Thank you for your generosity for the Harvest Festival. Many families in our own community and town will appreciate these kind donations.

Finally, after many years in the making, the building work has begun to create an EYFS Department that is contained and meets the needs of the pupils here at St James' Lanehead. We are also having some internal work carried out in the Key Stage 1 department. This work has been funded by the Diocese of Blackburn and also from the Barchester Fund. Thank you to the families who have contributed to this as The Governing Board has to pay 10% towards any building work within the school. We look forward to all the work being completed ready for the children to enjoy. Thank you to all children, neighbours, staff and families for their patience and cooperation in this exciting time. There will no doubt be some disruption but please see the opportunities that such projects bring to the school.

Please do enjoy the newsletter and take time to look at all the learning and additional information we have shared with you.

Have a nice Half term break and we look forward to welcoming the children back to school on the 31st October.

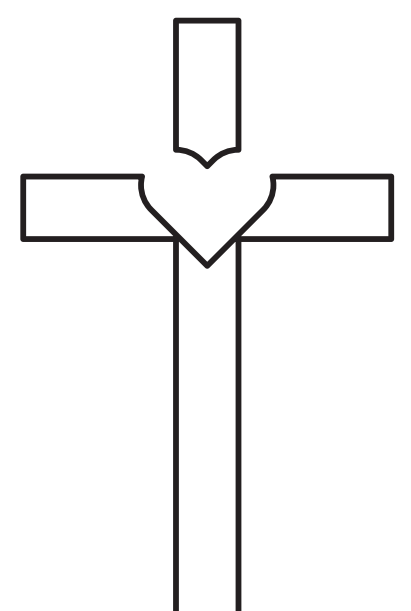
*Mrs Dugdale.*

## *Worship*

This year in collective worship, we are learning all about God's Big Story. Each week we are going to be introduced to a theme and a guest storyteller from Blackburn Diocese Board of Education.

This month we are learning all about:

- Jonah the Groaner
- On the Road to Damascus
- Down Through the Roof





## Class Worship

Thank you to all the parents/carers who came to watch Hawthorn Class' Worship this week. We hope you enjoyed it!

We have scheduled our class worships for the upcoming year. Please see below for the date/time of your child's class.

*Sycamore Class* - Thursday 23rd November @ 9.15am

*Rowan Class* - Thursday 25th January @ 9.15am

*Hazel Class* - Thursday 28th February @ 9.15am

*Willow Class* - Thursday 21st March @ 9.15am

*Beech Class* - Thursday 9th May @ 9.15am

*Elm Class* - Thursday 23rd May @ 9.15am

*Ash Class* - Thursday 27th June @ 9.15am



## School Lottery

Please sign up to the lottery and help our school.

<https://www.yourschoollottery.co.uk/>





## *Tag Rugby*

**To celebrate the Rugby world cup, some of our pupils went to a tag rugby competition at the Prairie Sports Village. Our Country was France.**

**The children played lots of games in the first round, but unfortunately lost by one try. However, In the second round we won every game.**

**The children all had a fantastic time and were so proud to come away with a medal. each.**

**Thank you to all the parents, carers and grandparents who came to support the children.**



## *Harvest*

**Thank you to everybody for your harvest donations,  
All the food has been taken to Burnley FC in the  
Community to help support the community kitchen.**

**We use this facility to support parents who may  
need it throughout the year and feel it is important  
that if we are able to give back we do so.**





## Bonkers for Conkers!

This week the children have been taking part in an Autumn Conker Competition as part of our Butterfly Moments.

The children have also been playing different traditional games and have been using Autumn leaves and conkers to create woodland art.

The children have loved taking part in these activities, please see some photographs below:



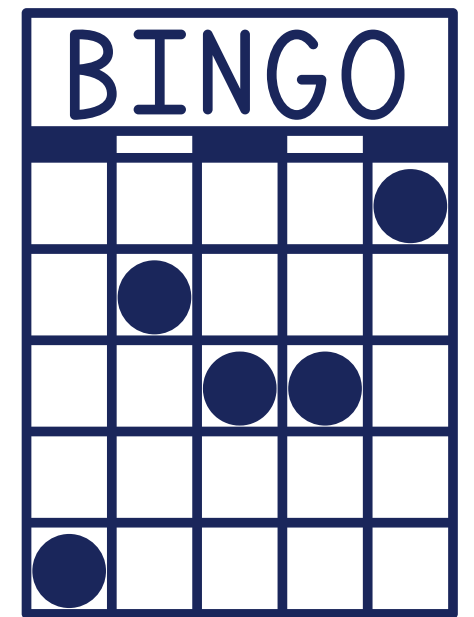


## PTFA

Thank you to all the PTFA who organised the bingo night.

We are delighted to announce we raised £641.

Thank you also to all who attended, it was a fantastic night.



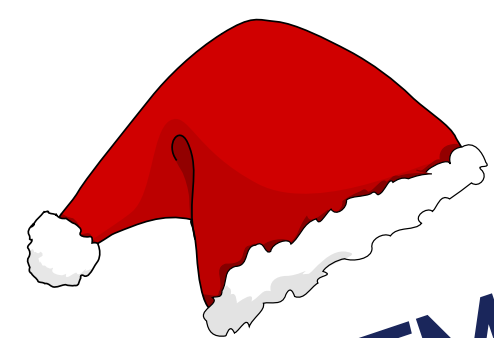
# Join our PTFA

Our PTFA numbers have dwindled recently and event organisation is now down to a very small few. This limits the funding, events and money we can raise for the children in school.

If you are interested in joining the PTFA, a meeting has been arranged for Monday 6th November at 2.45pm in school. Please complete the form on the school app if you are able to attend.

PTFA EVENTS INCLUDE:

BINGO NIGHT



CHRISTMAS  
FAIR



SUMMER FAIR





St James' Lanehead  
C of E (VA) Primary School

Email: [Office@st-jameslanehead.lancs.sch.uk](mailto:Office@st-jameslanehead.lancs.sch.uk)  
Tel - 01282 426833

Monthly Issue No3: 20th October 2023

## Open Mornings

Please see attached our open mornings for prospective parents.



**St James' Lanehead Primary  
School**



# Open Mornings 2023

October	November
Wednesday 4th @ 9.30am	Wednesday 1st @ 9.30am
Tuesday 10th @ 9.30am	Tuesday 7th @ 9.30am
Wednesday 18th @ 9.30am	Tuesday 14th @ 9.30am
	Tuesday 21st @ 9.30am
	Wednesday 29th @ 9.30am

**Please call the school office on  
01282 426833 to book.**

**The deadline for primary school admissions is**  
*15th January 2024*





## Governing Board

**Let us introduce you to our Governing Board:**

**Janet Hartley**—Chair of Governing Board  
**Ryan Catlow** —Vice Chair of Governing Board and Parent Governor  
**Michelle Dugdale**—Ex-Officio Governor/Headteacher  
**Anna Dickinson**—Parent Governor  
**Ryan Catlow**— Parent Governor  
**Clare Madbouli**—Foundation Governor  
**Russel Hawkes** - Foundation Governor  
**Kathryn Ellidge**—Foundation Governor  
**Barbara Hanson**—Foundation Governor  
**Naomi Healey**—Foundation Governor  
**Christopher Holdsworth**—Foundation Governor  
**Lucy Hargreaves**—Staff Governor

We will post a little message from a Governor every month to help you get to know them.

### MEET OUR GOVERNORS

**Lucy Hargreaves**

STAFF GOVERNOR



I have been a teacher for 20 years, working in both secondary and primary schools in a variety of roles. Being part of the teaching staff at St. James' for the last 5 years has been a privilege and I feel lucky to work with a great team.

I am dedicated to supporting the children within our school to flourish and being part of the continuing journey, our school is on.

Outside of school, being a mum is my most important role and I spend a lot of my time supporting my children in the activities that they take part in. I also enjoy reading, spending time with family and friends and setting myself new challenges.

## Dawn to Dusk

The Dawn to Dusk childcare facility is available before and after school should you require it. Your child must be registered to start. If you need a registration pack, please collect one from the school office.

Before school: From 7.00am

After school: Until 5.30pm



### Late Collection-

**School closes at 3.30pm and children must be collected at this time.**

**Dawn to Dusk is at full capacity with registered children and cannot take late collections.**

**If children are repeatedly collected late, this is considered a safeguarding risk and further action may be taken.**

## Parking

**Several neighbours have reported to school that there are some families who have deliberately chosen to be rude to them. Unfortunately, there is a small handful of parents who are choosing deliberately to block drive ways and some have actually driven and parked on neighbours' driveways waiting for their children.**

**We have also had reports of people stopping in the middle of the road and the children being told to get out. This is so dangerous. We are holding a meeting regarding the parking and we are asking people to do the right thing and not be rude.**

**If you see anyone parking illegally/inconsiderately please forward their registration plate to <https://unitedkingdom1cpp-portal.digital-policing.co.uk/lancashire/appeal/public-dashcam-submission>**

**We are also doing the same, Thank you**



## Upcoming Events



*Tuesday 31st October*

School re-open to pupils



*Wednesday 1st November*

Open Morning @ 9.30am

*Tuesday 7th November*

Open Morning @ 9.30am

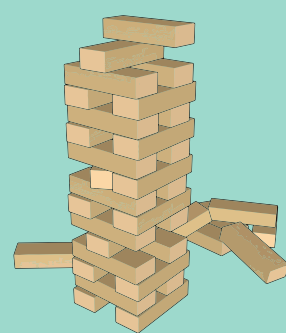
*Thursday 9th November*

Sycamore and Hawthorn Class -  
Egyptian Workshop in School.



*Friday 10th November*

Remembrance Day - Family Friday



*Tuesday 14th November*

Elm Class - Games Afternoon

*Friday 17th November*

Hazel Class - Ribchester Roman Museum



*Tuesday 21st November*

Open Morning @ 9.30am

*Thursday 23rd November*

Sycamore Class Worship @ 9.15am







## Term Dates 2024/2025

**Please see below our Term Dates for the 2024/2025 Academic Year.**



### School Term & Holiday Patterns 2024-25

#### Autumn Term 2024

INSET (Closed to pupils)	Monday 2 <sup>nd</sup> September 2024
Re-open to pupils	Tuesday 3 <sup>rd</sup> September 2024
Mid Term Closure	Monday 21 <sup>st</sup> to Friday 25 <sup>th</sup> October (inclusive)
INSET (Closed to pupils)	Monday 28 <sup>th</sup> October 2024
Re-open to Pupils	Tuesday 29 <sup>th</sup> October 2024
Closure after school	Thursday 19 <sup>th</sup> December at 1.30pm
INSET (Closed to pupils)	Friday 20 <sup>th</sup> December 2024

#### Spring Term 2025

Re-open to pupils	Monday 6 <sup>th</sup> January 2025
Mid Term Closure	Monday 17 <sup>th</sup> February to Friday 21 <sup>st</sup> February 2025 (inclusive)
Closure after school	Friday 4 <sup>th</sup> April 2025 at 1.30pm

#### Summer Term 2025

INSET (Closed to pupils)	Tuesday 22 <sup>nd</sup> April 2025
Re-open to pupils	Wednesday 23 <sup>rd</sup> April 2025
May Day Closure	Monday 5 <sup>th</sup> May 2025
Polling Day	Thursday 8 <sup>th</sup> May 2025 – TBC (REMOTE LEARNING)
Mid Term Closure	Monday 26 <sup>th</sup> May to Friday 30 <sup>th</sup> May 2025 (inclusive)
INSET (Closed to pupils)	Monday 2 <sup>nd</sup> June 2025
Re-open to pupils	Tuesday 3 <sup>rd</sup> June 2025
Closure after school	Tuesday 22 <sup>nd</sup> July at 1.30pm

## PE & Forest School Timetable

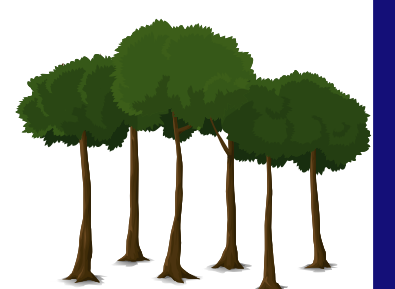
### P.E Timetable

EYFS - Monday  
Elm (Year 1) - Wednesday  
Beech - Thursday & Friday  
Willow - Tuesday & Wednesday  
Hazel - Tuesday & Thursday  
Rowan - Monday & Wednesday

Sycamore - Tuesday  
Hawthorn - Friday  
Oak - Thursday



### Forest School



Tuesday - Oak Class  
Wednesday - Sycamore Class  
Thursday - Hawthorn Class