



## Message from the Headteacher

Dear Families

As we end the year we take time to pause, reflect, share joy and hope for the future.

This term we have had so many wins! The field has come alive with Our Classroom Under the Sky and the feedback from the pupils is incredible. They love the learning that takes place outdoors. The office and staff team have organised many experiences to bring the curriculum to life, the Visits and Visitors and not to mention the amazing teaching and learning.

As you will have seen the new EYFS department has been built and it will be an amazing facility for our youngest pupils. The previous Ash classroom will be transformed into a purpose-built meeting room and Inclusion room.

The staff team are the jewel in the crown of St James' Lanehead. Their absolute dedication and drive for educational excellence is amazing and their drive for all children to achieve is a credit to them.

Everyone works incredibly hard and it is delightful to work in such a fabulous school of professionals. After Christmas we will be welcoming another member to the team, Miss Aspden in the school office, she will be working 8am until 1pm daily, please help to make her feel very welcome.

The children this term have been a delight, staff have enjoyed working alongside the children and it has been a pleasure to see so many children working so hard. Many visitors comment on how kind, respectful and hardworking our children are. All children are expected to be ready to learn and to try their best and follow the Calm School Code.

You will be receiving the reports for Autumn term in January once all the assessments have been completed. This is an opportunity for the teachers to share with families the outcomes and any work that the families can be doing to assist with the progress of their children. We know that when children are fully supported at home and school then they will do well.

On behalf of our Senior Leadership team and amazing staff team we would like to wish you all a Merry Christmas and a prosperous 2024.

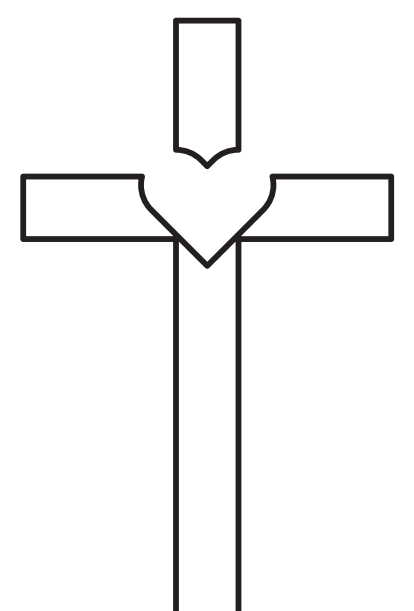
*Mrs Dugdale*

## Worship

This year in collective worship, we are learning all about God's Big Story. Each week we are going to be introduced to a theme and a guest storyteller from Blackburn Diocese Board of Education.

Next month we will be learning all about:

- The Magi Visit
- Jesus the Boy in the Temple
- Phillip and the Ethiopian
- A Brave and Mighty Man - Gideon





## *Class Worship*

**We have scheduled our class worships for the upcoming year.  
Please see below for the date/time of your child's class.**

*Rowan Class* - Thursday 25th January @ 9.15am

*Hazel Class* - Thursday 28th February @ 9.15am

*Willow Class* - Thursday 21st March @ 9.15am

*Beech Class* - Thursday 9th May @ 9.15am

*Elm Class* - Thursday 23rd May @ 9.15am

*Ash Class* - Thursday 27th June @ 9.15am



## *School Lottery*

**Please sign up to the lottery and help our  
school.**

<https://www.yourschoollottery.co.uk/>





## The North Pole Experience

**On Tuesday 5th December, Rowan Class were fortunate enough to watch an amazing pantomime put on by the theatre group, Just Imagine, which was thoroughly enjoyed by all! After the show, the children were able to join in with four different workshop activities and received a participation certificate as well as a very special badge from Santa himself saying that they were on the nice list! We hope you enjoy these pictures as much as the children enjoyed the pantomime.**





## *Christmas Fair*



**Thank you to everyone for attending the Christmas Fair on Friday 8th December. It was a great turn out.**

**Our PTFA stalls managed to raise £ 1280!**

**The class stalls raised £561 in total, meaning that we can donate £281 to Pendleside Hospice.**

**We are going to invite Pendleside Hospice into school in the new year to accept a cheque on schools behalf.**

**Well done to the KS2 children for all their hard work creating items to sell for their class stalls, the children spent an afternoon in class watching a Christmas Film and the PTFA provided sweets for them.**

**Thank you again to everyone who bought raffle tickets and attended the fair. Thank you also to the staff who gave their own time to stay on and support.**

**We have just ordered the leavers hoodies for our year 6 pupils, purchased Christmas gifts for all pupils and have something else very exciting in the pipeline so these funds are greatly needed.**

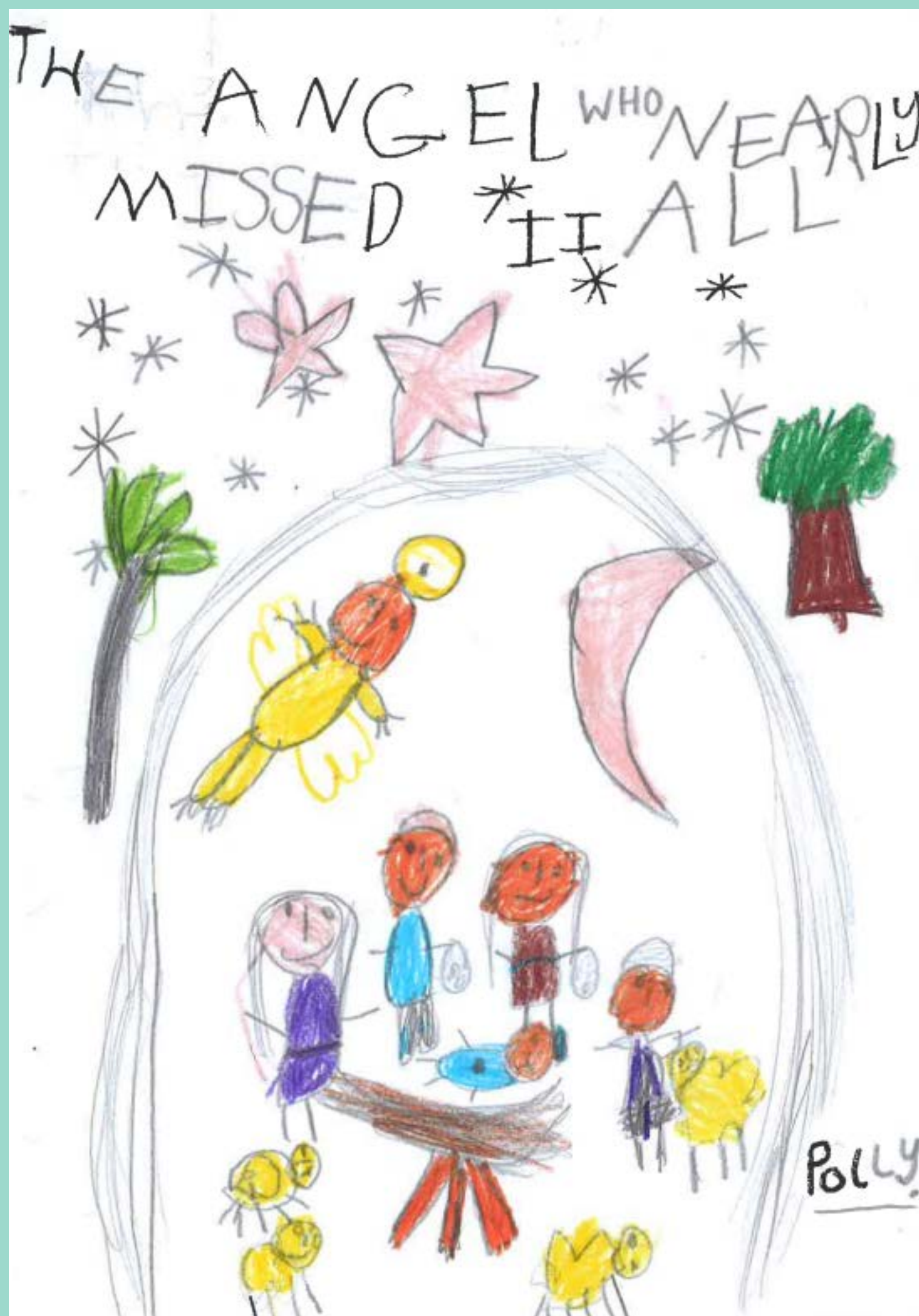




## EYFS & KS1 Nativity

**We would like to say a huge well done to all our EYFS and KS1 pupils who took part in their Nativity performance on Wednesday 13th December. For some pupils this was the first time they have ever performed on a stage.**

**Both performances were fully sold out and we are sure you can all agree the children were fantastic. We would also like to say a big thank you to all the EYFS & KS1 staff for all their hard work and dedication.**





## KS2 Carol Concert

**Well done to all our KS2 pupils for their fantastic performance in the Carol Services on Tuesday 19th December.**

**All the children behaved exceptionally.**

**Thank you to all the KS2 staff for all their hard work organising this event.**

**Thank you to St James' Briercliffe Church for hosting our Carol Service again this year.**

**Also, a big thank you to Janet Hartley for opening up the Church so many times for all the children to come up and rehearse.**

**Thank you to all the parents/carers that came to watch the children, the collection raised £150 for Church.**

**We hope that the service filled you with joy, happiness and Christmas Spirit!**





## Carol Singing

**On Friday 15th December, the School Choir went up to Oaklands Nursing Home to sing for the residents. The children had a lovely morning and all the residents were singing along to the Christmas Carols. The children enjoyed a cup of hot chocolate with all the trimmings afterwards to warm them up**





## Special Visitor

**On Wednesday 20th December we had a very special visitor in school.**



**Father Christmas came to see us!**

**Every class got chance to go and meet Father Christmas and sang some songs with him and Mrs Clause. The children then each received a gift.**

**It was such an exciting morning!**

**Thank you to the PTFA for kindly donating the gifts for the children.**







## Upcoming Events

*Monday 8th January*

School re-open to pupils



*Friday 12th January*

Rowan Class - Anglo-Saxon Workshop

*Friday 19th January*

Family Friday - 2.45pm

*Thursday 25th January*

Rowan Class Worship @ 9.45am



*Friday 26th January*

DINO Experience - Elm and Beech Class

*Friday 2nd February*

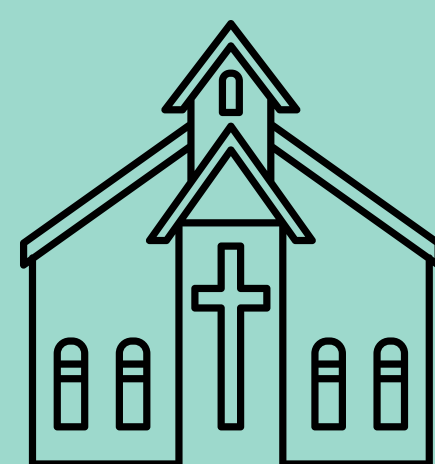
Non-Uniform Day - NSPCC

*Tuesday 6th February*

Oak Class - Towneley Hall Visit

*Thursday 8th February*

Sycamore and Hawthorn Class - Church Visit



*Friday 9th February*

School Closes @ 3.30pm - February Half Term



## Governing Board

**Let us introduce you to our Governing Board:**

**Janet Hartley**—Chair of Governing Board

**Ryan Catlow** —Vice Chair of Governing Board and Parent Governor

**Michelle Dugdale**—Ex-Officio Governor/Headteacher

**Anna Dickinson**—Parent Governor

**Clare Madbouli**—Foundation Governor

**Russel Hawkes** - Foundation Governor

**Kathryn Ellidge**—Foundation Governor

**Barbara Hanson**—Foundation Governor

**Naomi Healey**—Foundation Governor

**Christopher Holdsworth**—Foundation Governor

**Lucy Hargreaves**—Staff Governor

We will post a little message from a Governor every month to help you get to know them.



## PE & Forest School Timetable

### PE Timetable

**Elm** - Monday (Year 1 Only), Wednesday (Reception and Year 1)

**Beech** - Thursday & Friday

**Willow** - Tuesday & Wednesday

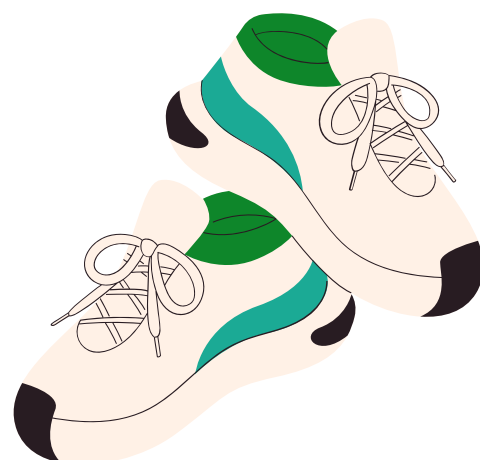
**Hazel** - Tuesday

**Rowan** - Friday

**Sycamore** - Wednesday & Thursday

**Hawthorn** - Monday & Friday

**Oak** - Tuesday & Thursday



### Forest School Timetable

**Ash** - Wednesday

**Hazel** - Thursday

**Rowan** - Tuesday



**On the day your child has Forest School, please send them to school in their school uniform as normal, with Forest School items in a bag.**



St James' Lanehead  
C of E (VA) Primary School

Email: [Office@st-jameslanehead.lancs.sch.uk](mailto:Office@st-jameslanehead.lancs.sch.uk)  
Tel - 01282 426833

Monthly Issue No5: 21st December 2023

## Poppy Appeal



# THANK YOU

YOUR POPPY SUPPORTS THE ARMED FORCES  
COMMUNITY PAST AND PRESENT

Thank you for supporting the Poppy Appeal.

**St James' Lanehead Church of  
England Primary School**

raised during Poppy Appeal 2023

**£321.42**

To find out more about how your donation helps,  
visit [rbl.org.uk](http://rbl.org.uk)

Registered charity number: 219279



## *Term Dates 2024/2025*

**Please see below our Term Dates for the 2024/2025  
Academic Year.**



### **School Term & Holiday Patterns 2024-25**

#### **Autumn Term 2024**

INSET (Closed to pupils)	Monday 2 <sup>nd</sup> September 2024
Re-open to pupils	Tuesday 3 <sup>rd</sup> September 2024
Mid Term Closure	Monday 21 <sup>st</sup> to Friday 25 <sup>th</sup> October (inclusive)
INSET (Closed to pupils)	Monday 28 <sup>th</sup> October 2024
Re-open to Pupils	Tuesday 29 <sup>th</sup> October 2024
Closure after school	Thursday 19 <sup>th</sup> December at 1.30pm
INSET (Closed to pupils)	Friday 20 <sup>th</sup> December 2024

#### **Spring Term 2025**

Re-open to pupils	Monday 6 <sup>th</sup> January 2025
Mid Term Closure	Monday 17 <sup>th</sup> February to Friday 21 <sup>st</sup> February 2025 (inclusive)
Closure after school	Friday 4 <sup>th</sup> April 2025 at 1.30pm

#### **Summer Term 2025**

INSET (Closed to pupils)	Tuesday 22 <sup>nd</sup> April 2025
Re-open to pupils	Wednesday 23 <sup>rd</sup> April 2025
May Day Closure	Monday 5 <sup>th</sup> May 2025
Polling Day	Thursday 8 <sup>th</sup> May 2025 – TBC ( <b>REMOTE LEARNING</b> )
Mid Term Closure	Monday 26 <sup>th</sup> May to Friday 30 <sup>st</sup> May 2025 (inclusive)
INSET (Closed to pupils)	Monday 2 <sup>nd</sup> June 2025
Re-open to pupils	Tuesday 3 <sup>rd</sup> June 2025
Closure after school	Tuesday 22 <sup>nd</sup> July at 1.30pm