



Message from the Headteacher

Dear Families,

We hope that you enjoy the newsletter as it is jammed pack full of learning and opportunities the school have provided for all our pupils.

We have so many staff who work hard to ensure that the children flourish here at St James' Lanehead. It is brilliant that the children are coming forward with new ideas and initiatives to run various lunchtime clubs. They are so thoughtful and considerate. I personally enjoy faciliatating these on Monday, Tuesday and Thursday lunchtimes.

I would like to say a huge thank you to one of our Governors, Mr Hawkes. Mr Hawkes has been a Governor here for 8 years and has supported the school educationally on many trips and visits. Mr Hawkes has offered to continue to work with Chess Club on a Monday and volunteer his expertise to the children. We are so lucky to have him here at St James' and we are pleased he wants to continue to volunteer his services in a different capacity.

I would like to wish you all well for upcoming Easter weekend, I hope this is a time for rest, peace, prayer and a chance to recharge.

I would also like to wish families Eid Mubarak as this also falls during the holidays.

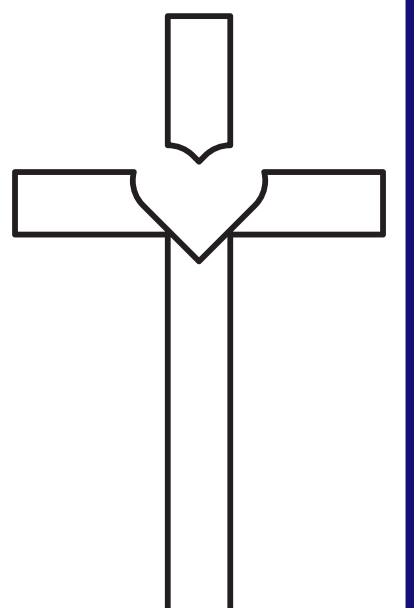
Mrs Dugdale

Worship

This year in collective worship, we are learning all about God's Big Story. Each week we are going to be introduced to a theme and a guest storyteller from Blackburn Diocese Board of Education.

Next month we will be learning all about:

- **The Road to Emmaus**
- **Moses - The Great Escape**





Class Worship

**We have scheduled our class worships for the upcoming year.
Please see below for the date/time of your child's class.**

Beech Class - **Thursday 9th May @ 9.15am**

Elm Class - **Thursday 23rd May @ 9.15am**

Ash Class - **Thursday 27th June @ 9.15am**



School Lottery

**Please sign up to the lottery and help our
school.**

<https://www.yourschoollottery.co.uk/>





World Book Day 2024

We celebrated World Book Day on Thursday 7th March 2024.

The children started the day by entering The Great Hall in Hogwarts and got sorted into their houses.

The rest of the day was spent taking part in different activities based on different books. Each class were given a different book to focus on. See if you can guess any of the books by looking at the pictures below.

The children also took part in 'The Masked Reader' quiz where they had to guess which member of staff was behind the mask!

It was a fantastic day which both the children and staff thoroughly enjoyed.





Science and Industry Museum

Beech class had an incredible trip to the Science and Industry Museum in Manchester. First, we explored the Manchester Revolution Gallery looking at Manchester's industrial heritage linked to Rolls-Royce motorcars. We learnt that the Rolls-Royce motor company started life in Manchester and was the result of a remarkable partnership between Henry Royce, an expert engineer, and Charles Rolls, a motorcar pioneer. We learnt that Rolls and Royce were committed to experimentation and testing. Together, they led the way in early motor technology, creating motorcars that were powerful, quiet and more reliable than their competitors. After this we explored the Experiment Gallery where we got the opportunity to test our senses and flex our superpowers. We experimented on how to see through walls, found out how to shake hands with our self, built sturdy bridges and tall towers, made music with our body as well as played songs on musical pipes and getting creative with glow-in-the-dark art. Next, we had a well deserved break in the Picnic Lounge and then after lunch we made our way to the Textiles Gallery. Here we learnt that Manchester is built on cotton. The Textiles Gallery told us the story of the people, places and products that made it and their continuing legacy in Manchester and our own local area today. Finally, we had our final visit to the Revolution Manchester show. We had the pleasure of watching an expert Explainer who provided us with an action-packed show that told us the story of how science met industry in Manchester, building our world and shaping our lives today. We also saw some incredible scientific experiments such as flying balls. The children learnt a lot about the history and science of our local area with prior knowledge that will link into future History and Science topics throughout their time in school.





Coffee and Cake

Thank you to all those who booked a table at one of our Coffee and Cake sittings to celebrate Mothering Sunday. We hope you had a lovely time.



Our next Family Friday is the Eid Celebration. This is taking place on Friday 19th April when we return after Easter.

Eid Mubarak

Oak Class - Gawthorpe Hall

Oak Class visited Gawthorpe Hall to take part in Shakespeare Week. We were greeted by our hosts and Edward had the job of announcing our arrival!

We took part in a range of activities including: black stitch, learning the Shakespearean language, how to sword fight and the timeline of Shakespeare's life. Everyone took part in the activities and enjoyed learning more about this historic figure.





Ash Class - Teddy Bears Picnic

If you go down to the woods today...

Ash Class had a great day getting ready for and taking part in the Teddy Bear's Picnic. The children made sandwiches, bear buns to eat and made place mats. In the afternoon, we learnt how to draw a teddy bear, played games with our teddy bears, danced to songs, ate our delicious picnic and read some teddy bear stories. It was a jam-packed day, but we loved it!



Message from the Governing Board

Dear Families,

It has come to the attention of the Governing Board that a small minority of the school community have taken to social media to air their grievances in particularly derogatory and potentially defamatory and therefore legally actionable terms.

The Governing Board would like to remind parents and families that they should raise any concerns through the schools adopted communication protocols, so they can be appropriately addressed.

The Governing Board would like to express their gratitude to the numerous parents who have contacted the staff team and governors to express their support and appreciation at this time.

The Governing Board of St James' Lanehead.



PE and Forest School Time Table

PE Timetable :

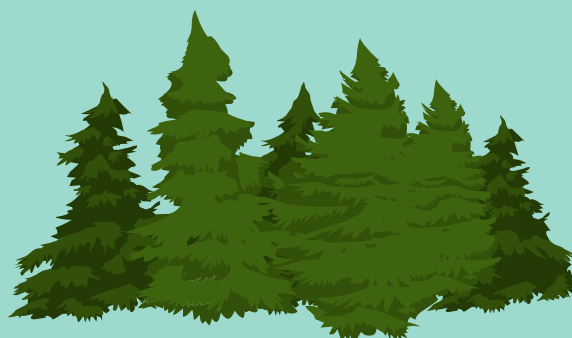
Ash Class - Friday
Elm Class - Monday
Beech Class - Wednesday
Willow Class - Friday

Hazel Class - Thursday & Friday
Rowan Class - Monday & Tuesday
Sycamore Class - Tuesday & Thursday
Hawthorn Class - Monday & Wednesday
Oak Class - Tuesday & Wednesday



Forest School Timetable:

Elm Class - Tuesday
Beech Class - Thursday
Willow Class - Wednesday



On the day your child has Forest School please ensure they come to school dressed in their school uniform. Their Forest School items should be brought in a bag.

Forest School clothing includes: wellies or walking boots, waterproof coat and old clothes that you are happy to get wet & muddy.

Forest School will take place whatever the weather.

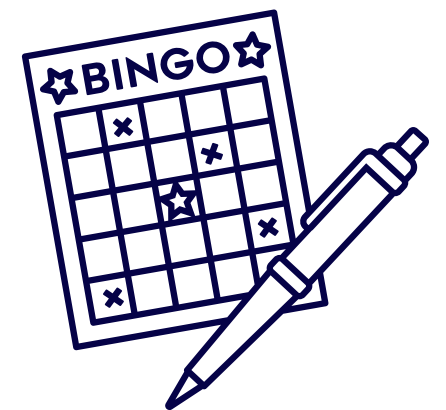


Join Our PTA

**Who wants to join our school PTA?
What is it for? You say, backing away.
The short answer is fundraising, pennies and pounds-
The school's tight stretched budget can't always go round.
We buy extra resources, for learning and play,
To enrich and enhance our children's school day.**



**Who wants to join our school PTA?
What do you do? You gingerly say,
Well, we run Christmas Fair, Summer Fair, Bingo Night,
Cake sales, Easter events, we've a lot on our plate!
We serve teas and coffees at most school events,
On baking cakes and biscuits much time is spent.
Christmas Party Day, is for us the best bit,
Serving dinner for children, inviting Santa to visit.**



**Who wants to join our school PTA?
Is it all mothers' meetings? You nervously say.
It's true that we chatter at the school gate,
Lot's of business gets sorted around half past eight.
But we really are a very mixed bunch,
Business people, professionals and ladies that lunch
You don't have to be female to be part of our club...**



**So who wants to join our school PTA?
I've heard it's quite cliquey, as a last ditch you say.
No, not in the slightest, we welcome everyone,
There's a lovely team spirit, it's hard work but fun.
Between staff and parents, we strengthen the link.
Are you interested? Will you join us? What do you think?**



**If you're convinced or just curious about what we do each year
Come along to the meetings, there's more to see and hear.**

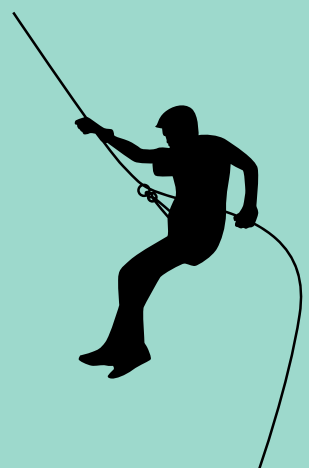
*Our next meeting is taking place on Tuesday 30th April @ 2.30pm.
If you would like to join us, please call the school office.*



Upcoming Events

Monday 15th April

School re-opens to pupils



Tuesday 16th April

Hazel & Rowan Class Trip - Outdoor Elements

Wednesday 17th April

Sycamore & Hawthorn Class Trip - Blackpool Pleasure Beach

Thursday 18th April

Ash Class Trip - Thornton Hall Farm



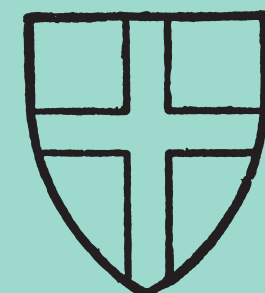
Eid Mubarak

Friday 19th April

Family Friday - Eid Celebration

Friday 26th April

Family Friday - St George's Day



Thursday 2nd May

Polling Day - Remote Learning



Thursday 9th May

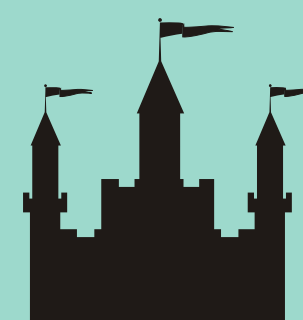
Beech Class Worship @ 9.15am

Monday 13th May

Year 6 SATS Week

Friday 17th May

Beech Class Trip - Skipton Castle





Term Dates 2024/2025

Please see below our Term Dates for the 2024/2025 Academic Year.



School Term & Holiday Patterns 2024-25

Autumn Term 2024

INSET (Closed to pupils)	Monday 2 nd September 2024
Re-open to pupils	Tuesday 3 rd September 2024
Mid Term Closure	Monday 21 st to Friday 25 th October (inclusive)
INSET (Closed to pupils)	Monday 28 th October 2024
Re-open to Pupils	Tuesday 29 th October 2024
Closure after school	Thursday 19 th December at 1.30pm
INSET (Closed to pupils)	Friday 20 th December 2024

Spring Term 2025

Re-open to pupils	Monday 6 th January 2025
Mid Term Closure	Monday 17 th February to Friday 21 st February 2025 (inclusive)
Closure after school	Friday 4 th April 2025 at 1.30pm

Summer Term 2025

INSET (Closed to pupils)	Tuesday 22 nd April 2025
Re-open to pupils	Wednesday 23 rd April 2025
May Day Closure	Monday 5 th May 2025
Polling Day	Thursday 8 th May 2025 – TBC (REMOTE LEARNING)
Mid Term Closure	Monday 26 th May to Friday 30 th May 2025 (inclusive)
INSET (Closed to pupils)	Monday 2 nd June 2025
Re-open to pupils	Tuesday 3 rd June 2025
Closure after school	Tuesday 22 nd July at 1.30pm